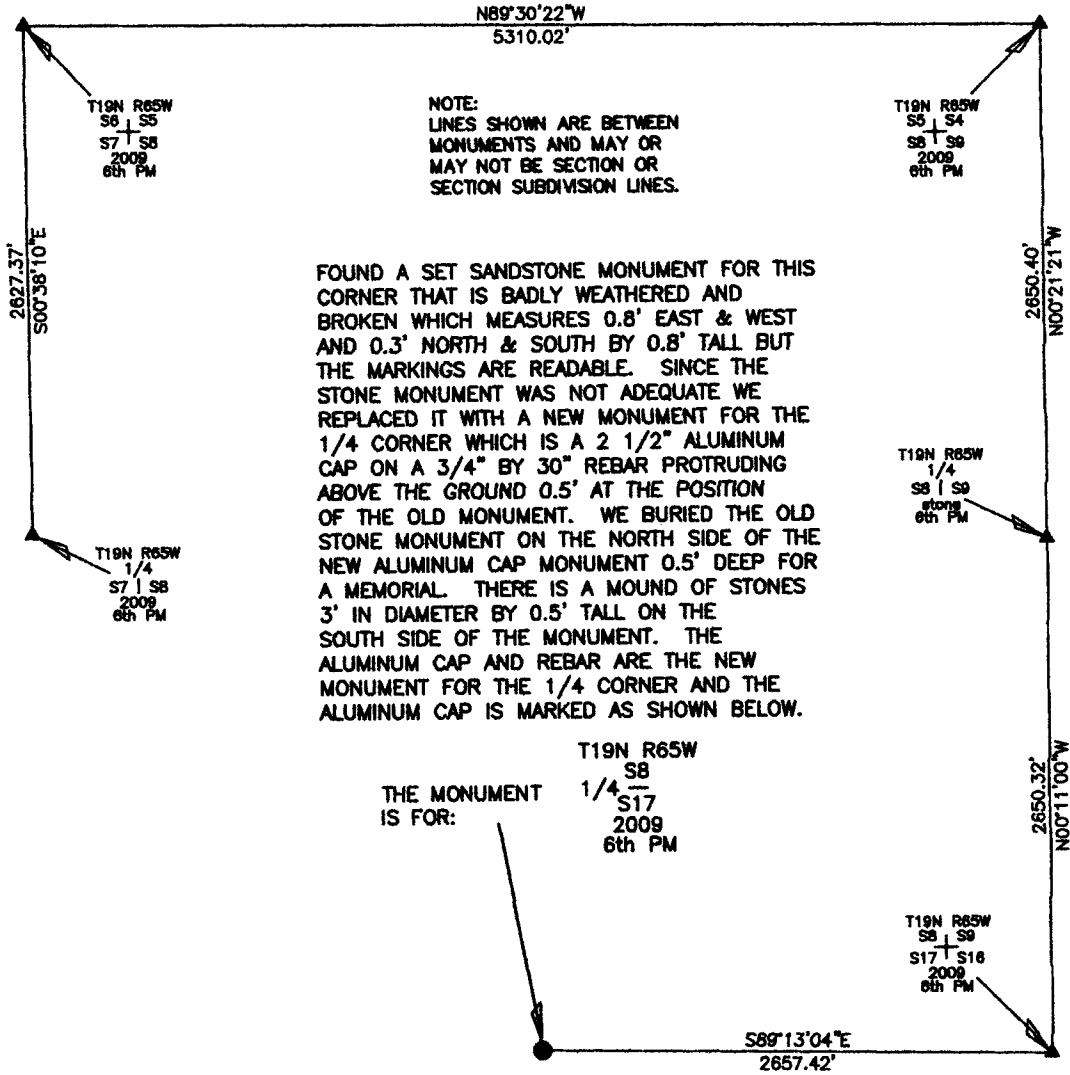


# State of Wyoming Corner Record

(In compliance with the *CORNER PERPETUATION AND FILING ACT*, Wyoming Statutes, 1977, Section 36-11-101, et. seq., and the Rules and Regulations of the Board of Registration for Professional Engineers and Land Surveyors.)

Reverse side of this form may be used if more space is needed.

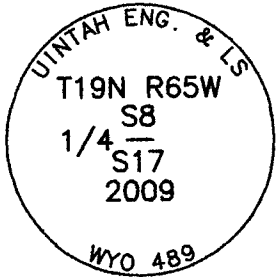
Record of original survey and citation of source of historic information (if corner is lost or obliterated). Description of corner monumentation evidence found and/or monument and accessories established to perpetuate the location of this corner. Sketch of relative location of monument, accessories, and reference points with course and distance to adjacent corner(s) (if determined in this survey). Method and rationale for reestablishment of lost or obliterated corner.



NOTE:  
LINES SHOWN ARE BETWEEN MONUMENTS AND MAY OR MAY NOT BE SECTION OR SECTION SUBDIVISION LINES.

FOUND A SET SANDSTONE MONUMENT FOR THIS CORNER THAT IS BADLY WEATHERED AND BROKEN WHICH MEASURES 0.8' EAST & WEST AND 0.3' NORTH & SOUTH BY 0.8' TALL BUT THE MARKINGS ARE READABLE. SINCE THE STONE MONUMENT WAS NOT ADEQUATE WE REPLACED IT WITH A NEW MONUMENT FOR THE 1/4 CORNER WHICH IS A 2 1/2" ALUMINUM CAP ON A 3/4" BY 30" REBAR PROTRUDING ABOVE THE GROUND 0.5' AT THE POSITION OF THE OLD MONUMENT. WE BURIED THE OLD STONE MONUMENT ON THE NORTH SIDE OF THE NEW ALUMINUM CAP MONUMENT 0.5' DEEP FOR A MEMORIAL. THERE IS A MOUND OF STONES 3' IN DIAMETER BY 0.5' TALL ON THE SOUTH SIDE OF THE MONUMENT. THE ALUMINUM CAP AND REBAR ARE THE NEW MONUMENT FOR THE 1/4 CORNER AND THE ALUMINUM CAP IS MARKED AS SHOWN BELOW.

THE MONUMENT IS FOR:  
T19N R65W  
S8  
1/4  
S17  
2009  
6th PM



**CORNER MONUMENT SYMBOLS**

- RECORD IS FOR THIS CORNER MONUMENT.
- ▲ A RELATED CORNER OR WC MONUMENT.

SCALE 1"=1000'  
(EXCEPT IN TRIVIAL CASES)  
BEARINGS ARE RELATED TO WGS 84 WITH GPS OBSERVATIONS  
DRAWN BY: NJM  
P.C. J. FLOYD  
COUNTY: LARAMIE

THE MONUMENT IS MARKED

Date of Field Work: 04/19/2009 Office Reference: \_\_\_\_\_

**CROSS INDEX DIAGRAM**

A	1	2	3	4	5	6	7	8	9	10	11	12	13	14	15	16	17	18	19	20	21	22	23	24	25	A
B																										B
C		6																								C
D			5																							D
E				4																						E
F					3																					F
G						2																				G
H							1																			H
I																										I
J																										J
K																										K
L																										L
M																										M
N																										N
O																										O
P																										P
Q																										Q
R																										R
S																										S
T																										T
U																										U
V																										V
W																										W
X																										X
Y																										Y
Z																										Z
	1	2	3	4	5	6	7	8	9	10	11	12	13	14	15	16	17	18	19	20	21	22	23	24	25	

Firm/Agency, Address

UELS, LLC

85 South 200 East

Vernal, Utah 84078

Telephone Number: 435-789-1017

This corner record was prepared by me or under my direction and supervision.

SEAL & SIGNATURE



RECORDED 6/22/2009 AT 12:06 PM REC# 525085 JK# 2118 PG# 883  
DEBRA K. LATHROP, CLERK OF LARAMIE COUNTY, WY PAGE 1 OF 1

1/4 CORNER OF MAXIMUM CONTROL  
Corner Name: SOUTH 1/4 CORNER OF SECTION 8 Section: 8 T 19N R 65W ; 6TH P.M. Cross Index No.: J-7  
SBRPEPLS/PLSW: March 1994 (CLCR...SJA)